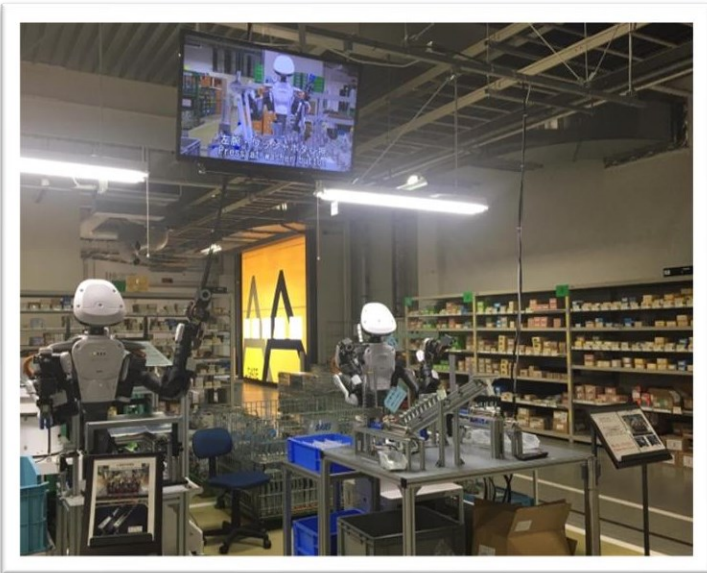
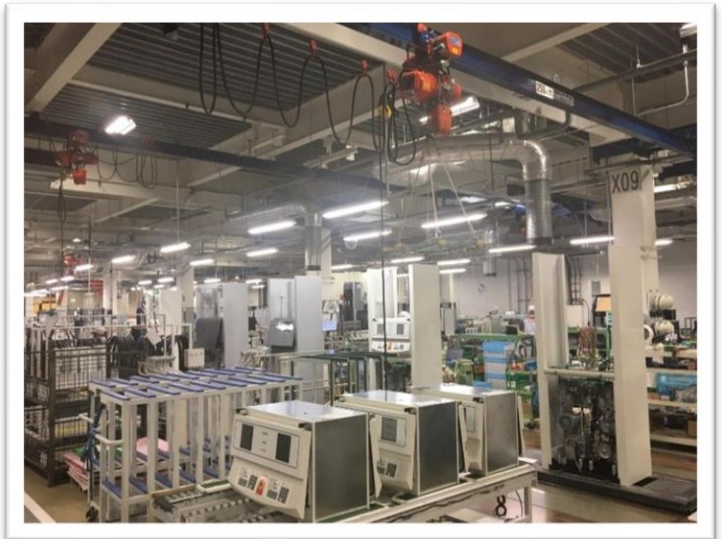
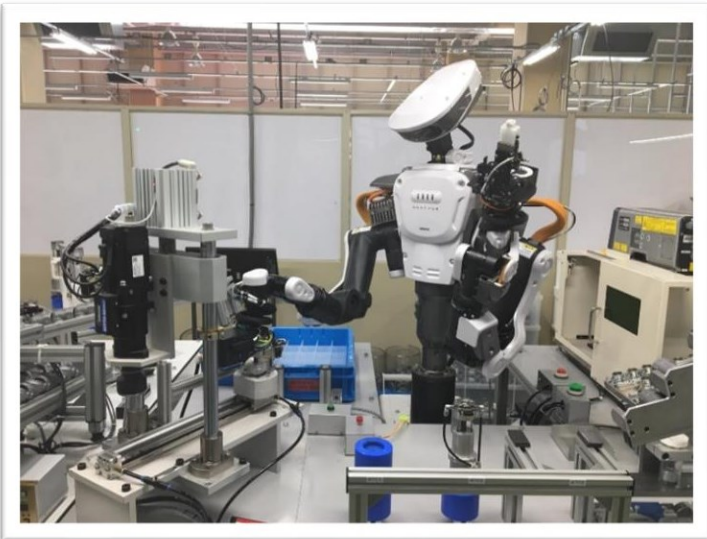


Tatsuno Premium dispensers



QUALITY FOCUSSED APPROACH



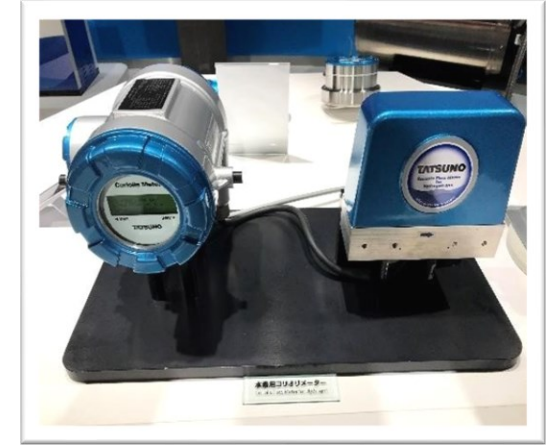
- Pioneering technology in production with robotics and humanoids
- Critical components including the drift-free meters produced and distributed to its group companies exclusively through this plant
- Uniform quality standards across all group companies



SOME OF THE MARQUEE PRODUCTS ACROSS FUEL RANGE

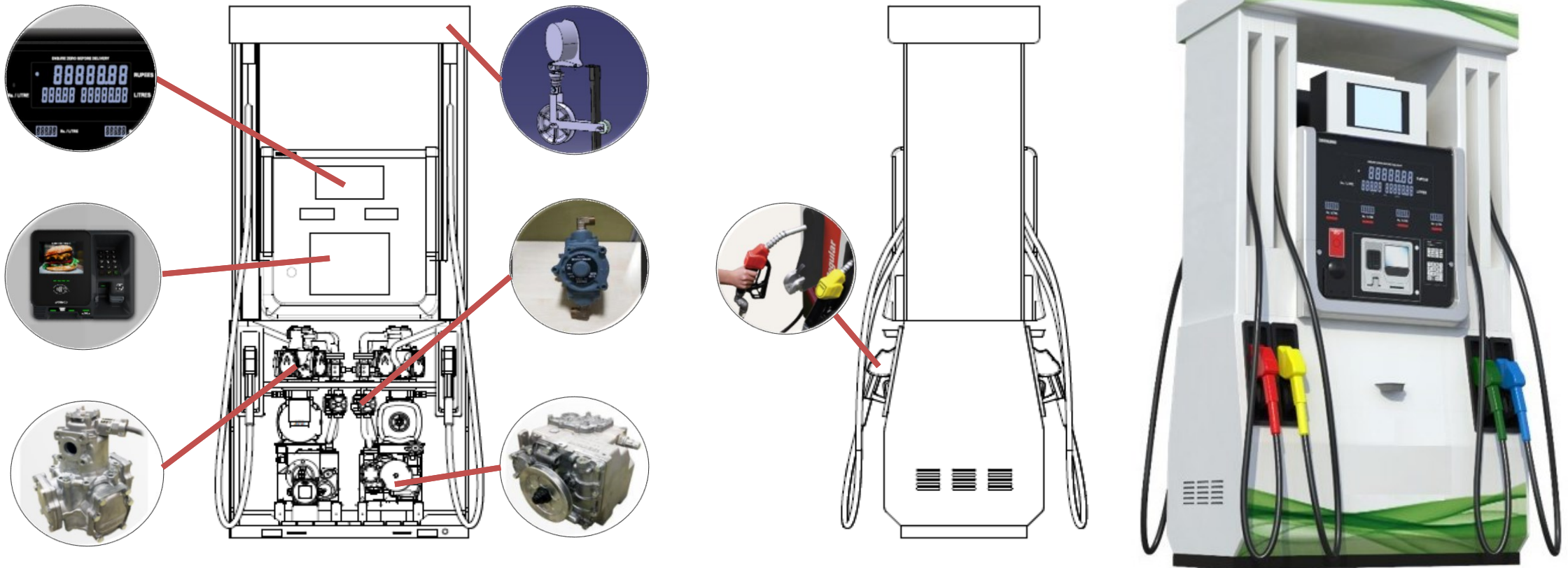


PRODUCTS AND INNOVATION



- Ahead-of-the-curve technology for all types of fuels including LNG, Hydrogen and EV.
- Drift free metering units with the best accuracy (0.25%) and repeatability in the world with calibration required only once in 7 years. Meters designed for higher ethanol blending up to 80%.
- Vertically integrated across the product chain

HIGH END FEATURES FOR PREMIUM DISPENSERS



DISTINCT FEATURES – DISPLAY



Existing display.



Offered in Tatsuno premium dispensers



- Large and clear display with high luminance of 1450 Candela/m².
- Urban characteristics white numeric on black base.
- High visibility in wide range.
- First in segment – Bigger digit size (50mm Height) as compared to 40mm digit size for conventional dispensers

DISTINCT FEATURES - HOSE RETRACTION



Existing hoses.



Offered in Tatsuno premium dispensers



- Sturdy wheel mounted hose retraction system designed and manufactured by Tatsuno Japan.
- **3 level retraction** based on vehicle positioning.
- Improve the environment. Hoses are kept orderly as compared to conventional MPDs.
- **Enhanced Safety** - Using hose retractions greatly reduces the incidence of work-related accidents caused by the tripping.
- Prolongs life- Reduces wear and tear increasing the service life of hoses **up to five times**.
- Improve operational efficiency- Operator can control hoses using spring mechanism, improving the productivity.

DISTINCT FEATURES – BEZELS



- Bezel added to the electronic counter to have a **distinct stylish and premium** look.
- Designed and manufactured by Tatsuno Japan.
- Designed in a manner so that hoses does not interfere with the display view.
- Black counter increases the **aesthetics** of the display section.

DISTINCT FEATURES – MULTIMEDIA SCREEN



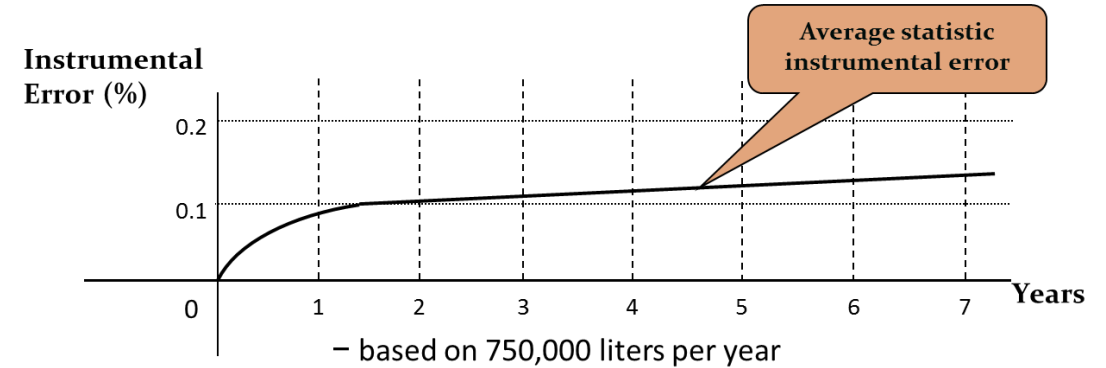
- The 10.1-inch IPS full view display has large visual angle, real color and excellent image quality integrated with the dispenser. Option to increase the size up to 20 inch.
- Enhances customer experience through rich content on the screen.
- Touch screen system with video player increases profitability by playing promotional media.
- Resolution of 1024 X 600

DISTINCT FEATURES – ULTRA LIGHT NOZZLES



- World's lightest nozzle (**Weighs 600gms** as against 1.2Kgs-1.8 Kgs of nozzle being used at IOCL stations)
- **User/ Operator friendly** – Light weight sand requires very little force to pull the lever.
- Less time to fill the tank with anti-frothing technology.
- **Reduces the amount of petrol vapor** generated due to refueling.

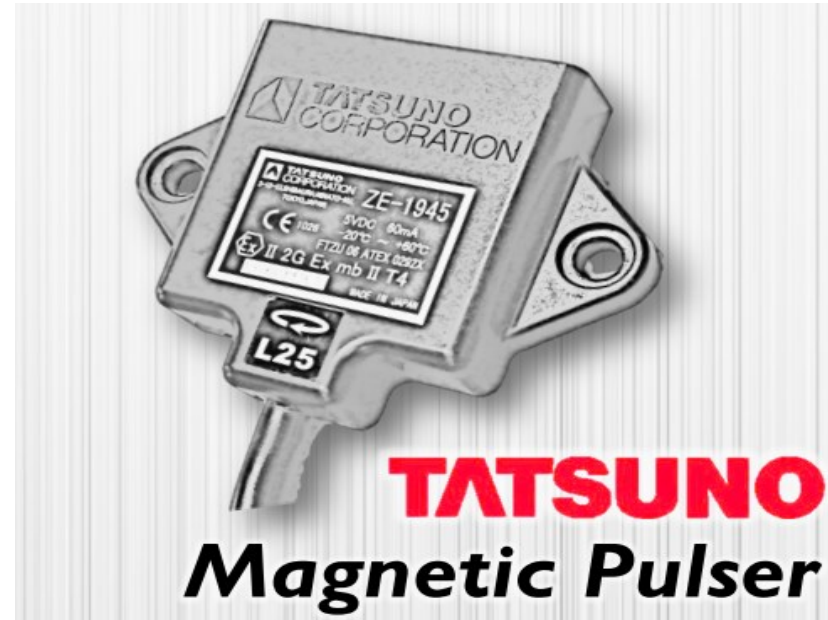
DISTINCT FEATURES – METERING UNITS



Meters manufactured using robotics and humanoids with AI to check for clearances.

- Meters designed and manufactured in Tatsuno Japan, well known for its **drift-free accuracy, repeatability and longevity**.
- Robotics and humanoids assisted meter manufacturing to ensure minimal drift.
- Tatsuno meters can be used for many years without the need for adjustments, which reduces the money you spend on service/ loss of business due to breakdown or recalibrations.
- The change in accuracy of Tatsuno dispensing units after fueling 15 million litres is within 0.11% as per the graph.

DISTINCT FEATURES – MAGNETIC PULSER



- Pulser working on **magneto resistive sensors**.
- A Magneto resistive sensor is good at unipolar sensing for precision, non-contact of displacement applications such as a link between meter and pulser, adding to the security of the system.

DISTINCT FEATURES – STRUCTURE



- **High gloss** (80-85%) finish panels for better aesthetics as compared to the conventional MPDs installed at IOCL stations.
- Aesthetic design form factor as compared to the conventional dispensers.
- Withstanding over 1000 hours of salt spray tests for **longer durability and resistance to higher humidity** up to 95%.
- Passes 300 hours of QUV accelerated weathering tests to **minimize color fading** over longer periods of operation.

DISTINCT FEATURES – PCBs



- All **industrial grade electronics components** as against commercial grade components with AES 256 encryption and other security functions.
- **Multilayer PCB design (4-6 layers)** as against 2-layer PCB used at IOCL stations for:
 - Better EMI/EMC performance
 - Better ESD performance
 - Extremely difficult to access the PCB architecture
- UL approved encoder grade signal cables (Complying With Flame retardant standard) for pulsar communication, giving highly reliable communication.

DISTINCT FEATURES - ELECTRONICS



- Renesas make CORTEX M4 ARM controller on all intelligent modules. Each microcontroller has a unique ID and complete traceability.
- Inbuilt hardware crypto engine controlling encryption.
- All intelligent module reprogramming by custom software with help of secured custom bootloader.
- Single control board which secures the physical circuits and makes it . (No separate boards with I/O board, Calibration board, Pulser signal board etc.)

WHY CHOOSE TATSUNO DISPENSERS ?

Accuracy of meter translating into value in cost saving and customer trust



Compliance

Rugged and long-lasting components



Lowest stamping costs

Innovation



Reliability

SERVICE VALUE



Integrity of Service team



Insourced Service Set up



Safety



Stocking points across India



Longest MTBF in the industry



Qualified and trained service team

Service first

- Safety is a culture ingrained in every process and person
- Only OEM with project and maintenance team on company rolls (*vis-a-vis outsourced services by competition*) PAN India.
- 30 state offices with GST compliance
- Comprehensive range of maintenance services including fuel cleaning, HDPE installation
- *In-house manufacturing facility of components and hanging hardware accessories*



The image shows a large, circular exhibition stand for TATSUNO. The stand is illuminated with blue light from the bottom. It features several gas pump models, including the 'TATSUNO SUNNY-MX' and 'TATSUNO Self' models. The stand is located in a dark, modern exhibition space with other displays visible in the background.

TATSUNO

In Innovation

In Reliable Services